

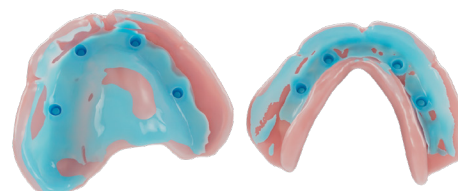
Digital Overdenture Technique

Removable Zest LOCATOR® System

Initial Appointment

1. If existing or immediate denture is present, create passive relief for each implant region
2. Verify if denture seats comfortably over implant sites
3. Proceed with a light body wash impression to capture LOCATOR abutments or housings in position
4. Capture bite scan and complete a 360° scan of each denture. Submit all records to AvaDent

LIGHT BODY WASH



DIGITALLY SCAN RECORDS



Try-In Appointment

1. Try-in full-color prototype denture with locator pockets with LOCATOR housings in place
2. Verify fit. New records needed if changes are made
3. Verify esthetics, phonetics, and occlusion
4. Make adjustments as necessary and confirm with patient

FULL-COLOR TRY-IN



Final Fit

1. Deliver AvaMax Overdenture with LOCATOR recesses or standard AvaDent overdenture
2. Use chairside pickup technique to engage housings
3. Confirm passive fit, retention, and provide patient care instructions

FULLY MILLED OVERDENTURE



With or Without Titanium Frame



Analog Overdenture Technique
Removable Zest LOCATOR System
Scan QR To Watch Video