

AVA DENT[®]

Digital Dental Solutions



AVAMAX
HYBRID DENTURES



AVAMAX
LOCATORFIXED™



AVADENT DENTURES



AVADENT REMOVABLE
OVERDENTURES



AVADENT
CONVERSION DENTURE

The Leading Provider of Fixed & Removable Digital Dentistry
The Original Digital Denture and Still the Best with over 80 Patents

AvaDent Produces the World's Best Fitting Prosthetics

It begins with Digital Design

Whether you're looking for a denture, partial denture, overdenture, or fixed hybrid, the journey to a superior dental prosthetic begins with precision design, and AvaDent's digital designs set the standard for accuracy.

Next, We Eliminate Distortion

We start by using patented technology to pre-shrink our custom milling discs, ensuring that each disc is perfectly primed for milling. This critical step allows us to mill our prosthetics to 100% scale, eliminating the post-curing distortion commonly seen in conventional and printed dentures.

Precise Quality Control

Each prosthetic undergoes rigorous quality control, verified by laser scanning to digitally compare the final product against the original impression and design. This meticulous process guarantees that every AvaDent prosthetic fits exceptionally well.

Why You Should Care

The result? Our precisely engineered prosthetics require fewer adjustments and less chair time, significantly boosting the profitability of your practice by ensuring efficient, predictable outcomes.

99.9%

Denture Success Rate

#1

Company to Commercialize Digital Dentures

13 Year

History of Excellence

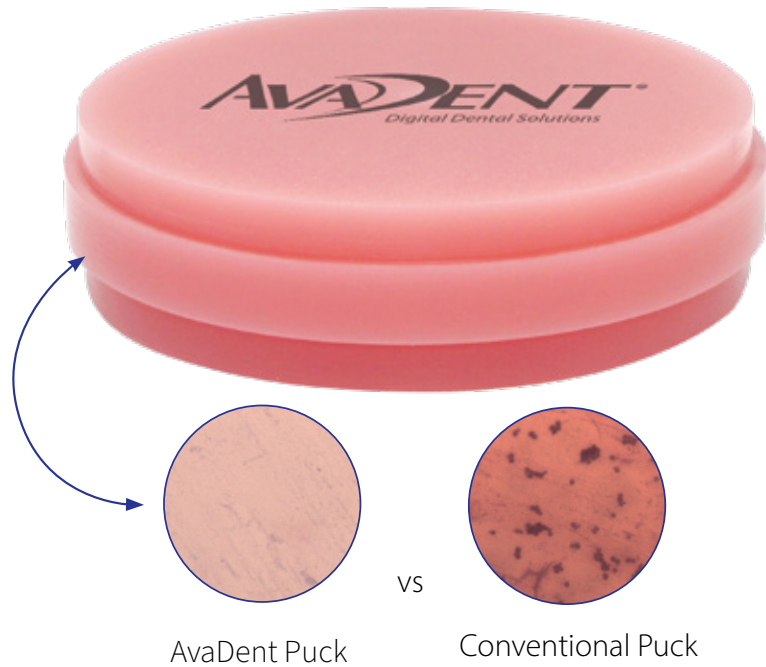
400K+

Patients Served

80+

Patents Granted or Pending

The Best Prosthetics Require Superior Materials

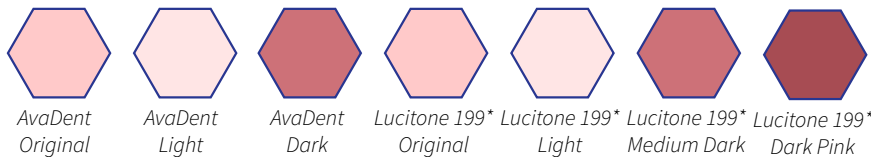


AvaDent's proprietary puck manufacturing process, which utilizes a patented industrial production technique, effectively enhances the material properties by carefully managing polymerization and tempering processes. Our patented manufacturing method results in a notably increased density, rendering our dentures nearly 100% porosity-free. Consequently, this porosity reduction minimizes bacteria accumulation that causes unpleasant odors, leading to better oral health and hygiene for denture wearers.

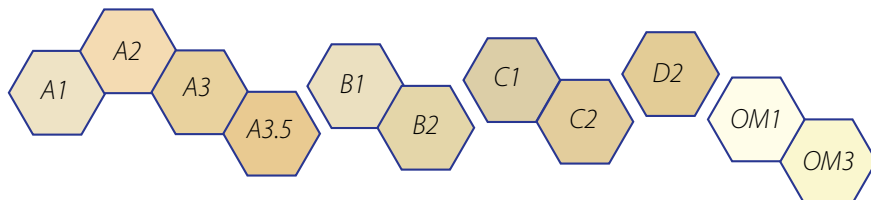
Benefits of AvaDent's High Density Discs

- Reduces bacteria growth and denture breath
- High impact, homogeneous puck is fracture and stain resistant
- No material shrinkage and virtually monomer-free

Base Shades Available



Vita® Classical Tooth Shades



* LUCITONE® is a trademark of Dentsply Sirona | Vita® is a trademark Of Vita Zahnfabrik H. Rauter GMBH & Co

MATERIALS

AvaDent Prosthetics Are Stronger

Our teeth are custom-manufactured for each patient in multiple layers that chemically bond to form one unified, durable structure. Our patented high-pressure manufacturing system enhances strength up to eight times compared to conventional and printed dentures because the teeth and base are chemically one piece. This increased density also makes the dentures less prone to bacterial growth, ensuring greater oral health.



PMMA Puck is heat compressed



Puck is custom milled to create patient-specific tooth sockets



Dentin layer added and heat compressed again



Custom dentin layer is milled



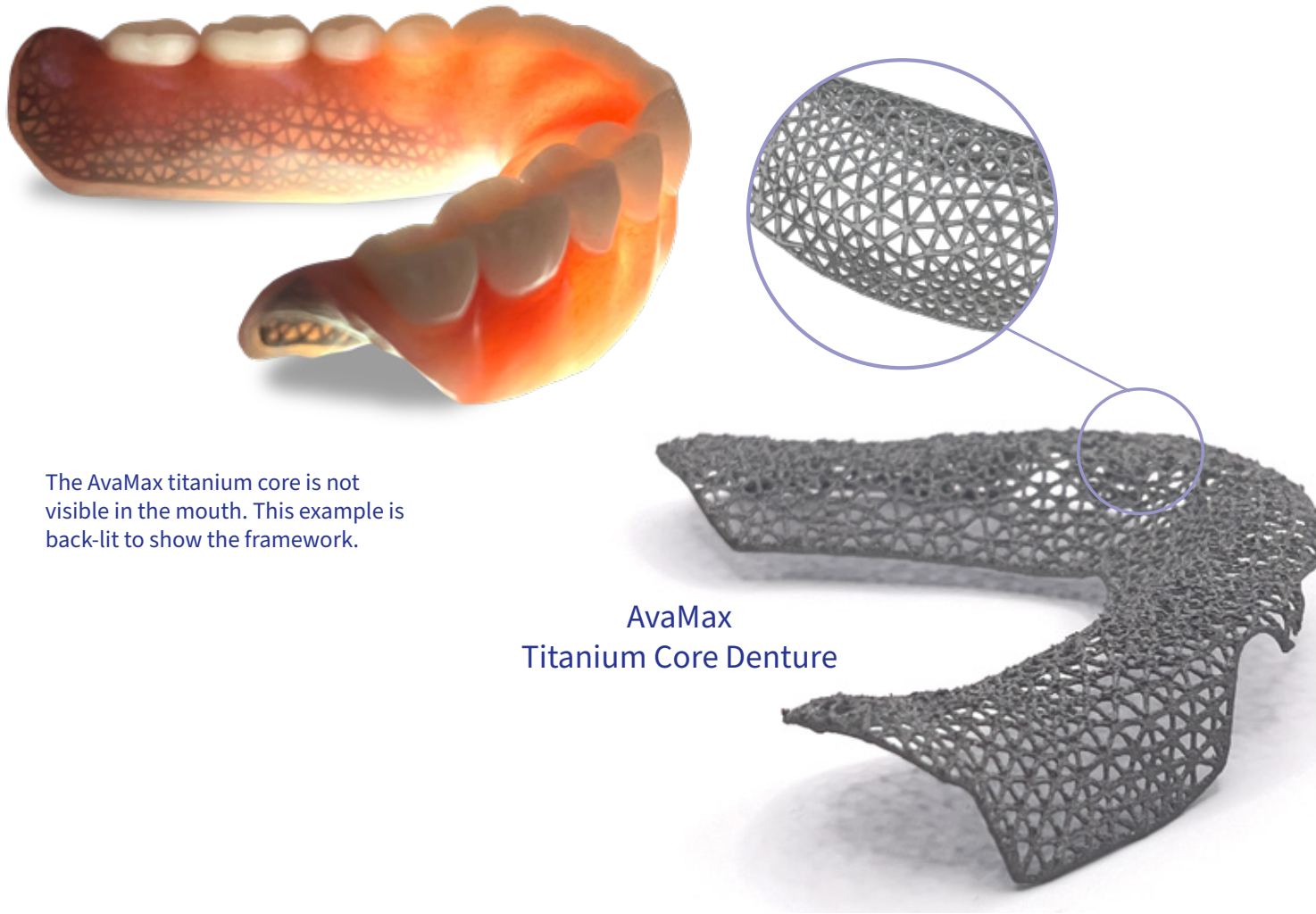
Esthetic translucent layer added and heat compressed before final milling step



After milling, each final prosthesis is scanned to check for accuracy.

AvaMax™ Dentures For Added Strength

AvaMax offers a custom designed Titanium bar for superior strength by combining high-density PMMA with custom titanium meshwork, ideal for patients with strong biting forces using implant overdentures or hybrid dentures. Unlike outdated methods, our precision-designed meshwork seamlessly integrates with the acrylic during molding, ensuring durability without the need for manual reinforcement.



The AvaMax titanium core is not visible in the mouth. This example is back-lit to show the framework.

AvaMax
Titanium Core Denture

STRONGEST

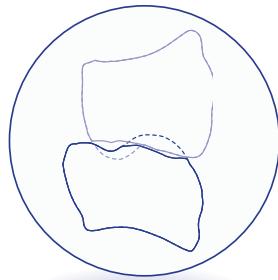
Perfect Occlusion and Fit Saves Chair Time

Fast Chairside Delivery with Minimal Adjustments Reduces Patient Returns

AvaDent's AI Occlusion Software

AvaDent's patented 'Adaptive Occlusion' software is the first true dynamic digital articulation platform that allows us to adjust the occluding surfaces of teeth while maintaining their original contours. AvaDent's approach surpasses traditional and 3D printing methods by eliminating the risk of post-processing distortion, ensuring our products are consistently precise and true to scale. Furthermore, we have the highest quality standards in the industry by 3D laser scanning all our products and digitally comparing them to the original design files approved by our customers, verifying the accuracy of fabrication.

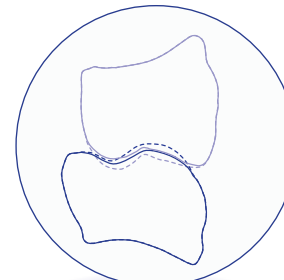
TYPICAL
DENTURE TEETH



Chair-Side Occlusal Adjustment Process

- Time-consuming
- Less accurate
- Not repeatable

AVADENT
DENTURE TEETH



AvaDent Occlusal Adjustment Performed by Software

- Reduces denture adjustments
- Extremely accurate
- Repeatable

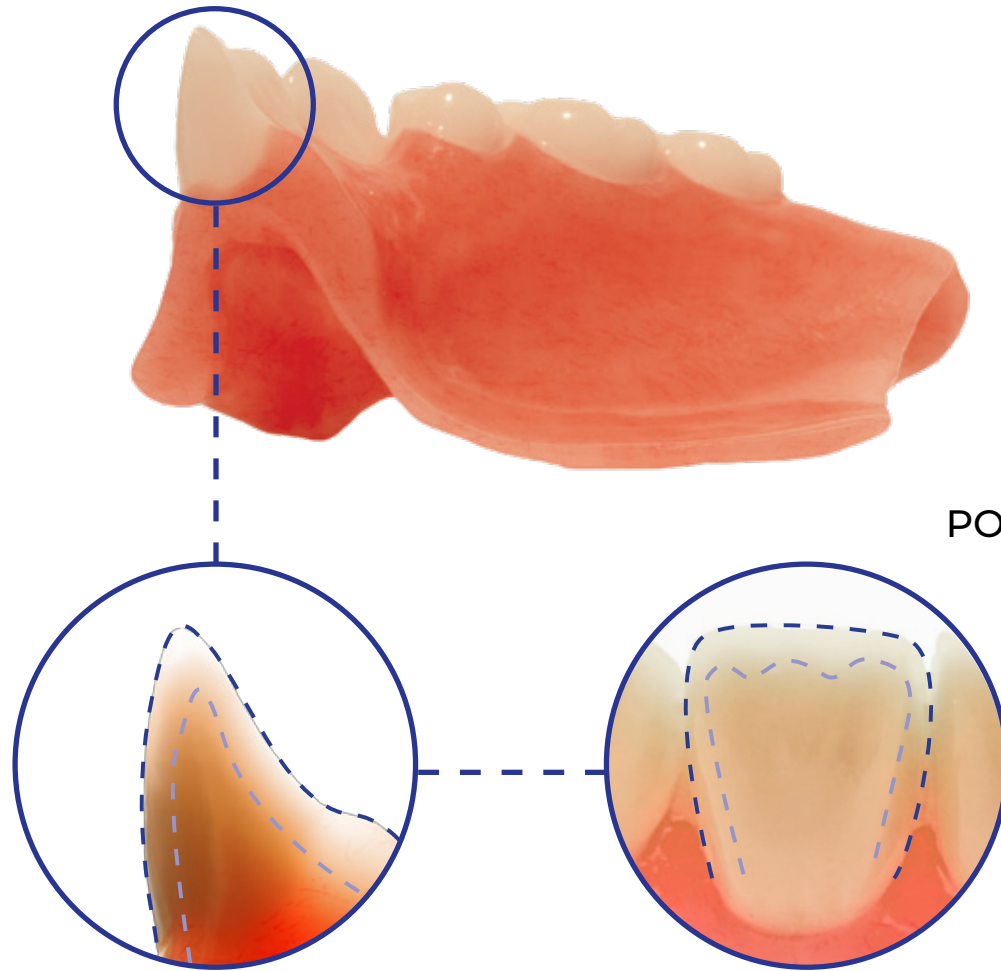
”
Just like my practice, the entire digital denture industry began with AvaDent. While both the technology and the techniques are ever-advancing, AvaDent remains at the leading edge, consistently bringing the best of the digital dental age to reality.

Dr. Andrew C. Johnson



AvaDent Teeth Are Beautiful

AvaDent PMMA denture teeth are custom designed for each patient and made in multiple layers just like premium denture teeth. The chroma and hues are presented in three dimensions. Mamelons are present and translucency extends interproximally. Our milling process is customized for each arch. Using our proprietary software, we design the teeth to look like carded denture teeth – custom for each case – in multiple layers.



XCL-2
POLYCHROMATIC TEETH

NATURAL

Working with AvaDent is Easy

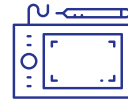
There is no need to modify your existing workflow

WE OFFER COMPLETE FLEXIBILITY



1. CREATE RECORDS

Use your conventional or digital technique. We just need accurate records.



4. DESIGN

We do it all for you and we give you access to the most advanced removable design software in dentistry to review and make changes.



2. DIGITIZE RECORDS

You can scan your records and send us your files, or you can send us your physical records and we can scan them for you.



5. PRODUCTION

We can send you an STL file to print or mill your try-in or we can make it for you. All final products are milled by AvaDent.



3. SUBMIT DIGITAL Rx

Log in to the AvaDent dashboard to select products, place order and submit your clinical records.



6. FINISHING / QC

Provide us with your preferences and we finish accordingly. We scan 100% of our products and measure the results against the original design file so you can be assured of a precision fit.



AvaDent Workflow

Scan the QR code

To access all clinical records required by AvaDent, scan the QR Code



Our Workflows Save You Chair Time!

Choose your workflow. They all save you chair time. And best of all, patients rarely return for adjustment appointments.

Reference
Denture &
BTI Technique



REFERENCE DENTURE



BOUMA TRY-IN (BTI)



FINAL DENTURE



Skip the
try-in for
a Two-
Appointment
Denture

Impression &
WTI Technique



INTRAORAL IMPRESSION



WAGNER TRY-IN (WTI)



FINAL DENTURE



Impression,
Wax Rims &
BTI Technique



INTRAORAL IMPRESSION



BASE WITH WAX RIMS



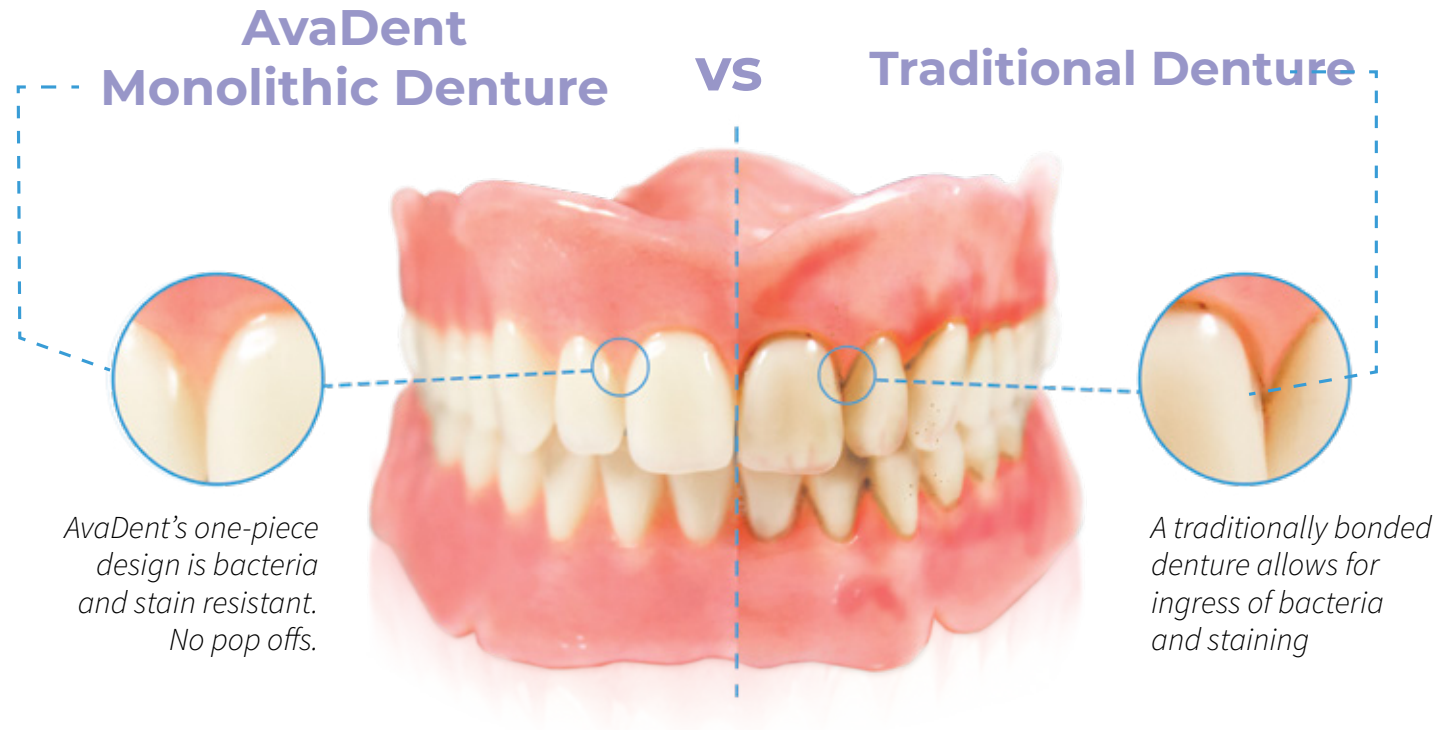
BOUMA TRY-IN (BTI)



FINAL DENTURE



Improved Oral Hygiene for Your Patients



“

I've been making dentures for over 50 years, so when I say the three appointment denture has changed the way I practice, that statement has weight. These dentures are highly esthetic, fracture resistant and extremely functional. I've eliminated my adjustment appointments altogether and my patients are happy! It's a winner!

Dr. Stephen Wagner



Why Choose A Milled Monolithic Prosthesis

Our monolithic prosthetics are milled entirely from an individual puck made from our patented cross-linked manufacturing process. There are no limitations on who you can treat - CLASS 1, 2, or 3 patients. Bonding material is no longer needed.

TRUE CUSTOM MONOLITHIC

One-Piece, No Bonding, Reduces Fractures & Bacteria

- More comfort due to seamless teeth-denture transition
- Up to 8 times stronger
- Better wear resistance
- Bacteria and stain resistant
- Limitless designs



Eight times stronger than conventional acrylics virtually eliminates fractures, no staining or denture base odor, and exceptional life-like esthetics of all their dentures, overdentures, and hybrid dentures! AvaDent gives our patients the best of all worlds!

Dr. Sam Strong

Wagner Try-In

The Wagner Try-In (WTI) combines traditional techniques with digital processes for efficient teeth movement by dentists. A clinician can deliver a final prosthesis in just three, 30-minute appointments using specially formulated wax. This wax softens in hot water, allowing the clinician to move teeth and establish the correct settings before ordering the final AvaDent digital denture. The process involves printing and setting maxillary anterior teeth in our special wax, using maxillary posterior teeth as bite stops, and mandibular anteriors printed in a single piece for desired overbite/overjet.

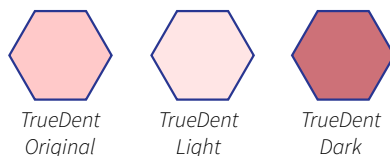


Bouma Try-In

The AvaDent Bouma Try-In began as a concept from Dr. Lars Bouma. It is a functional try-in that can be used to verify fit, phonetics, and esthetics and can be used as a spare denture. It is our most popular try-in and is available in three formats:



Full-Color BCTI Base Shades Available



Teeth: Most Vita® Classical Shades

1. Printed Full-Color (BCTI)

Dimensionally very accurate and full color to increase patient acceptance.

2. Printed Mono-Color (BTI)

Uses conventional “DLP” printing technology.

3. Milled Mono-Color (BTI)

Very durable and will be the exact fit of the final denture.



Mono-Color BTI Shades Available

Printed: NextDent N1 and BL

Milled: Most Vita® Classical Shades

Complete & Immediate Dentures

100% Monolithic, Perfect Fit



AvaDent Complete Denture

Our AvaDent Complete and Immediate dentures

are fully monolithic, offering up to eight times greater strength than traditionally fabricated or printed dentures. For additional support, AvaMax with a titanium integrated core is also available. Our patented manufacturing process ensures that AvaDent dentures are nearly free of monomers and pre-shrunk prior to milling for optimal fit, reducing adjustment appointments and increasing your profitability. Best of all the esthetics are unmatched!



AvaDent Immediate Denture



After completing each final prosthesis, AvaDent gives the dentist a Digital Denture Vault Card to pass on to the patient. This card explains how AvaDent securely stores the patient's digital records. It guarantees swift replacement if necessary down the line.

AvaMax technology is available in three types of prostheses



AvaMax
Titanium Core
Overdenture

Complete Denture

AvaDent dentures are up to 8 times stronger than conventional dentures. But in certain patient circumstances, an AvaMax reinforced denture may be indicated.

Implant Overdenture

The AvaMax design for overdentures include a titanium “basket” over each implant pocket. This helps to disperse the biting forces across the appliance. We pre-mill the implant pockets to preserve strength and save you valuable chair time.

Hybrid Denture

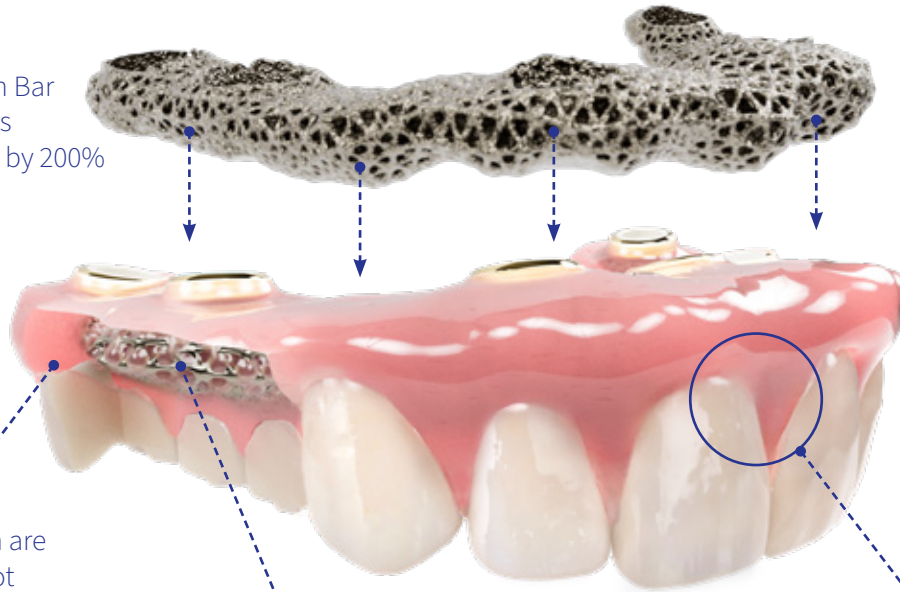
Conventional hybrids are typically made in two separate pieces, with a bar and a prosthesis joined together using cold-cure resins. However, this manual process can weaken the hybrid and lead to fractures and staining. In contrast, AvaMax hybrids are made as one piece. The titanium core is fully integrated with the acrylic and both are milled simultaneously as one piece to eliminate guesswork. This ensures that the acrylic and bar will never separate, providing a durable and stain-resistant hybrid solution.



AvaMax Hybrid Prosthesis

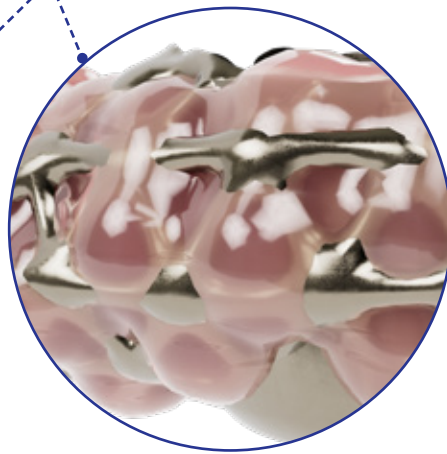
with Integrated Titanium Core

Printed Titanium Bar increases strength by 200%



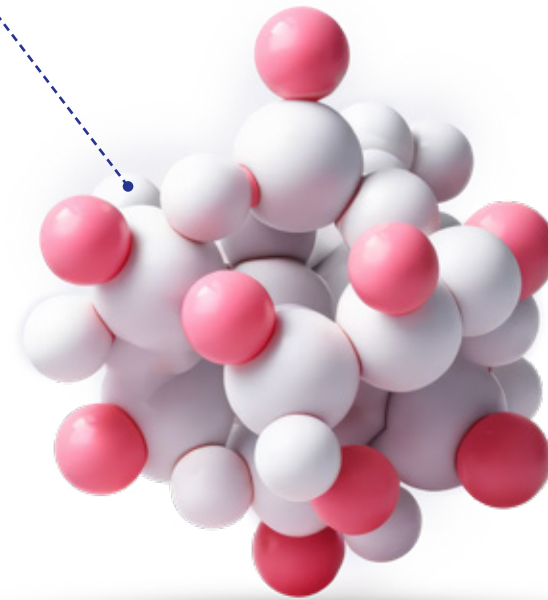
Base & Teeth are one-piece not bonded - zero popoffs

High Density PMMA base and teeth are molded and compressed over and through the Titanium Core, thus eliminating delamination



Our AvaMax Hybrid Prosthesis incorporates a unique printed titanium core combined with our patented High Density PMMA monolithic manufacturing process for superior strength and durability. Unlike conventional bar hybrids, the AvaMax framework is created digitally after the prosthetic is designed, thus optimizing the strength and function of the prosthetic.

AvaMax Hybrid Dentures are lightweight and more affordable than ceramic restorations. Our high-pressure monolithic process delivers a porosity-free and bacteria-resistant prosthetic. This product comes with a 5-year workmanship warranty.



By chemically binding and compressing the base and teeth material, we increase the strength by up to 8x of traditionally processed prosthetics.

AvaMax LOCATOR FIXED®

Redefining Permanent Restorations

AvaDent has created the perfect solution for **LOCATOR FIXED**. The titanium core is constructed in the same manner as our AvaMax Titanium Core Hybrid Prosthesis. However, instead of screw-retained access, this appliance provides metal reinforcement around the LOCATOR FIXED housings, giving the appliance unparalleled strength.



- **Stunningly Natural Appearance**
Designed to replicate the look and feel of real teeth, providing patients with a confident, beautiful smile.
- **Unmatched Durability**
Say goodbye to debonding bars—engineered for long-lasting performance.
- **Secure and Reliable**
Eliminates the frustration of teeth pop-offs, ensuring a worry-free experience.
- **Lightweight Comfort**
Up to 75% lighter than Zirconia, delivering unparalleled comfort for all-day wear.
- **Hygienic and Low Maintenance**
Resistant to bacteria and stains, promoting better oral health and easier care.

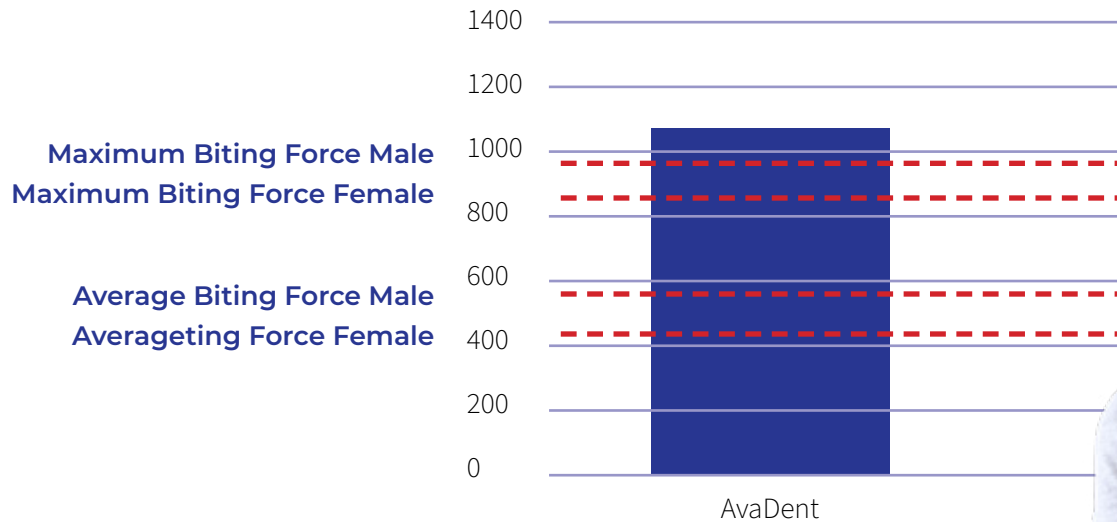


LOCATOR is a trademark of Zest Anchors, Inc.

Zest Dental Solutions White Paper

Prosthetic Materials and Guidelines for Use

Maximum and Average Biting Forces



Zest Dental Solutions White Paper

Michael D. Scherer, DMD, MS

Eric Kukucka, DD

Scan QR code 



AvaDent Conversion Denture

Elevating Dental Implant Solutions

The **AvaDent Conversion Denture** offers a revolutionary approach to immediate prosthetic solutions, combining advanced technology with exceptional durability and ease of use. Designed to integrate seamlessly with the **LOCATORFIXED™** Solution, it provides patients with a more comfortable, functional, and aesthetically pleasing smile.

Key Benefits:

- **Efficient Placement:** Utilizing anatomical indexing pads, the procedure ensures a precise fit, significantly reducing chair time and enhancing accuracy.
- **Immediate Functionality:** The conversion denture can be designed as an immediate denture, offering patients a full-arch prosthesis immediately after implant placement.
- **Stability and Comfort:** Anatomical indexing pads secure the prosthesis firmly, ensuring optimal stability and comfort.
- **Customizable Design:** The prosthesis can be adjusted into a traditional hybrid prosthesis, matching the patient's desired occlusion and aesthetics.
- **Minimized Surgical Impact:** Using the Zest LOCATOR FIXED Solution, the procedure minimizes trauma to surrounding tissues, shortening healing time and maximizing patient comfort.

For more information and to explore how the AvaDent Conversion Denture can transform your practice and offer your patients cutting-edge solutions, visit our website or contact us today.



The AvaDent LOCATOR
FIXED Conversion
Denture Procedure
Scan QR code →



Implant Supported Products and Services

AvaDent offers innovative dental products and services for improved implant procedures, including the Bone Reduction Guide Denture, a clear base-plate that contours tissue during implant cases. The Scanning Guide Denture is an exact duplicate of the final denture, and improves scanning effectiveness by differentiating teeth from soft tissue. The Conversion Denture, a monolithic Provisional Hybrid, is designed for guided surgery cases and becomes the provisional denture once the struts are removed. AvaDent's products provide a comprehensive solution for guided implant surgery.

We can fabricate a surgical guide from your design file. Alternatively, we can develop an implant plan using your DICOM files, then design and manufacture the surgical guide.

Bone Reduction Guide Dentures



Our Bone Reduction Guide Denture is a clear AvaDent baseplate surgically guided denture used to perform an alveoplasty and tissue contouring during immediate and implant cases.

Scanning Guide Dentures



Our Scanning Guide Denture is a clear radiopaque guide with fully milled dentition, an exact duplicate of the proposed final denture. To maximize the scanning effectiveness you can clearly differentiate the teeth from the soft tissue.

Conversion Dentures



Our Conversion Denture is a monolithic denture designed for guided surgery cases. The surgical guide is used to pre-mill holes in the denture based on implant position. Once the struts are cut away, it becomes the AvaDent Provisional Hybrid.

Surgical Guides



We offer surgical planning plus design and fabrication of surgical guides. A surgical guide reduces the time to prepare the surgical site for a dental implant and reduces the probability of complications arising from the procedure and can help shorten recovery time.

Implant Planning Services

Let us assist you with implant placement through our implant planning service. We also specialize in designing surgical guides.

EDUCATION

The AvaDent Educators Program

Elevate Your Prosthodontic Curriculum with AvaDent's Digital Denture Education Program

AvaDent is dedicated to advancing dental education by offering a comprehensive, free digital denture program tailored for dental schools. Currently adopted by over 35 institutions nationwide, our program equips educators and students with the tools and knowledge to excel in the evolving field of digital prosthodontics.

Program Components:

- **Program Introduction:** This module covers digital denture technology and its role in modern dentistry.
- **Undergraduate Learning Modules:** Developed by Dr. Brian Goodacre, these modules cover foundational concepts and practical applications of digital dentures.
- **Denture Tutorials:** Step-by-step guides on the basics of denture fabrication and the use of AvaDent's design software.
- **AvaDent Sandbox:** An interactive platform with a Demo Teeth Set-up Editor for skill practice and refinement.
- **eHuman License:** Each institution gets a free eHuman license for teaching complete dentures.

Benefits to Your Institution:

- **Cutting-Edge Curriculum Integration:** Incorporate the latest digital denture technologies into your prosthodontic courses, enhancing the learning experience.
- **Comprehensive Educational Resources:** Access a wealth of materials designed to support both instructors and students in mastering digital denture techniques.
- **Collaborative Learning Environment:** Join a network of over 35 dental schools committed to excellence in digital prosthodontics education.

Enrollment Information:

To enroll your institution in AvaDent's Education Program, please visit www.avadent.com/educators-program and complete the registration form.

For further inquiries, please contact our Education Coordinator at education@avadent.com or call (480) 275-7144.

Our Team Will Help You Get Started

If you want to get started and have questions, we are here to help. You can schedule an appointment with one of our board- certified prosthodontists. Scan the QR code below or give us a call at **408-275-7144**.



Schedule An Appointment with
Dr. Steve Wagner
Board-Certified Prosthodontist



Schedule An Appointment with
Dr. Tom Girvan
Board-Certified Prosthodontist



Schedule An Appointment with
Dr. Christopher Minke
Board-Certified Prosthodontist

Scan the QR Code and Schedule
a Call with our Digital Experts



Simplify Your Practice Growth

Unlock Your Practice's Potential with Expert Marketing Guidance

As a dental professional, your focus should be on patient care, not marketing. At AvaDent, we understand this challenge. While we are not a marketing company, our team has over 35 years of experience helping dental practices grow, specializing in dental implants and All-on-X procedures.

Tailored Marketing Solutions for Your Practice

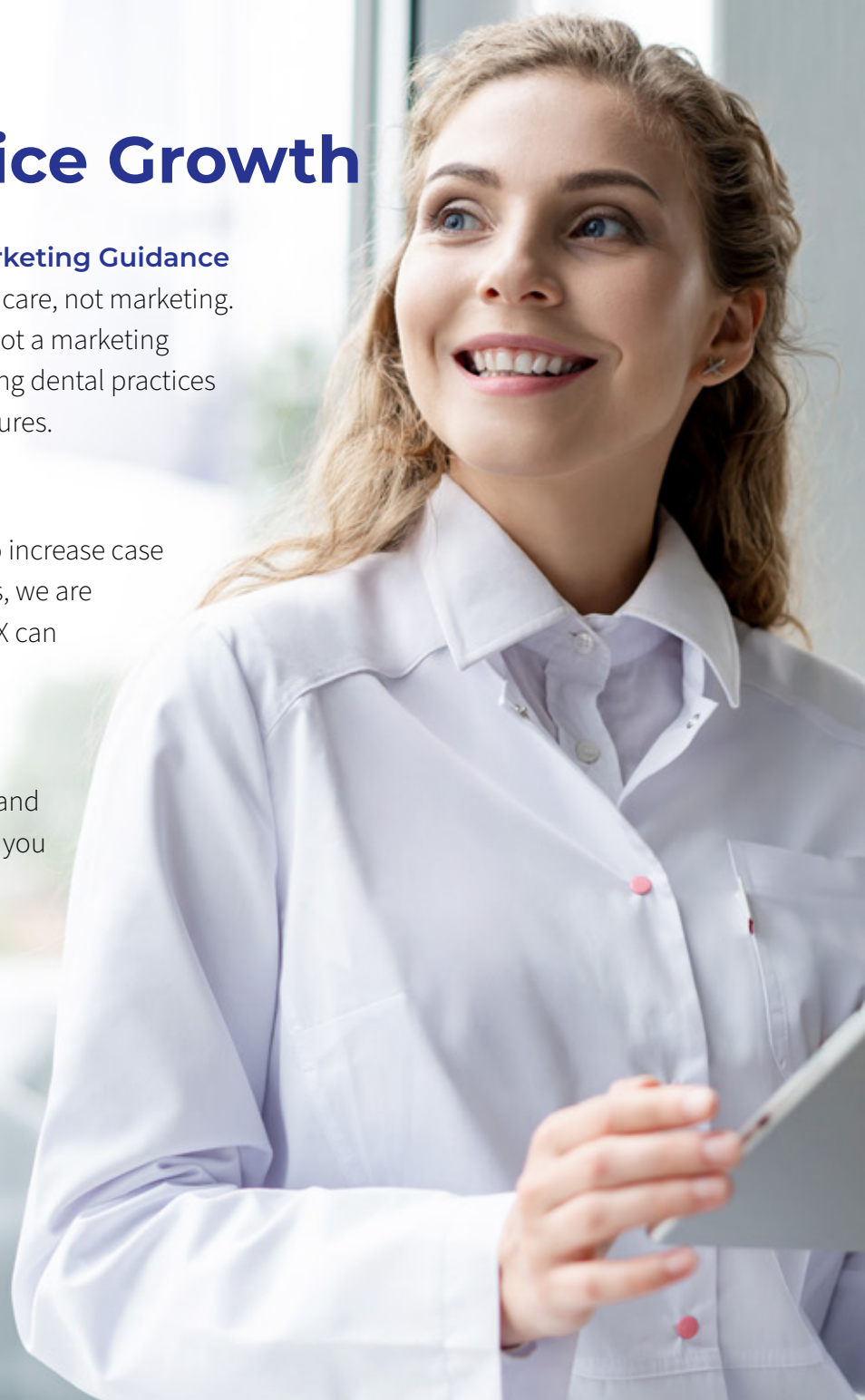
Whether you need advice on website design, strategies to increase case acceptance, or insights to enhance your marketing efforts, we are here to help. Our expertise in dental implants and All-on-X can provide invaluable support for your practice growth.

Partnering for Your Success

AvaDent is dedicated to helping dental professionals expand their practices. With proven, effective solutions, we guide you in making the right marketing decisions.

Take the first step toward transforming your practice. Schedule a free consultation by completing the form at **www.avadent.com/marketing**.

By partnering with AvaDent, you gain access to a wealth of experience and resources aimed at helping you reach your practice's full potential, and our advice is free.



Meet Team AvaDent

Customer Support



Dezeree Neuberger
Customer Service Manager



Kelly Watson
Lead Customer Service Rep



Mariah Hendrickson
Customer Service Rep



Robert Oyer
Customer Service Rep



Nathan McGertt
Customer Service Rep

Technical Support, Design & Manufacturing



Brent Thompson
Director of
Systems Engineering



Marcus Peck
Production Manager



Josh Rogers
Sr. Acct Supervisor
Lead Designer



Zach Johnson
Digital Tools
Team Lead



Madhurima Vemuri
Clinical Specialist



John Stancell
Case Planner &
Digital Support

Sales & Marketing



Daniel Hinkle
SVP Sales & Marketing



Michael Keeter
Sr. Director of
Business Development



Lucinda Brown
Sales Manager

Google Reviews From Some of Our Clients

I have been creating dentures, overdentures, and fixed prosthetics for over 30 years and I can confidently say that AvaDent represent a monumental leap in dental prosthetic technologies. Their customer support and design team truly set them apart from other labs. Their responsiveness and expertise ensure that every design and final product is meticulously perfected, leading to a seamless and efficient process. Patients enjoy fewer visits to my office thanks to the superb fit and reduced need for adjustments. I also want to call out their AvaMax implant-supported hybrid, it's a great alternative to traditional Zirconia solutions. It's significantly lighter than Zirconia, and unlike Zirconia it has some give so it's less stress on the implants and opposing teeth without sacrificing strength or durability. Incorporating AvaDent's advanced prosthetics into my practice has not only streamlined operations but also significantly improved patient outcomes, and my profitability.

BEST PRODUCT OUT THERE TODAY ★★★★★

- Dr. Cliff Degal



Global Dental Science LLC
15730 North 83rd Way, Ste 101
Scottsdale, AZ 85260
United States
info@avadent.com
Tel: +1 480 275 7144

www.avadent.com

Global Dental Science Europe B.V.
Ringbaan-Noord 7
5013 EA Tilburg
The Netherlands
info@globaldentalscience.eu
Tel: +31 (0) 88 700 5500

AvaDent is my go to lab for exceptional and consistent results on all of our milled denture, overdenture and mandibular hybrid cases. Love the design simplicity and the occlusion results are best in the industry. ★★★★★

- Mark S

As a practicing prosthodontist and academic, I've made a lot of dentures over the years. AvaDent dentures are by far the best fitting dentures. Their technology allows you to use any style of denture fabrication you are comfortable with from traditional wax rims to 3d printed try-ins with no proprietary rules or fancy apparatus. The company is easy to communicate with and happy to make modifications when you need them.

★★★★★

- Matthew K

I have worked with the Team at AvaDent for the past 18 months. I have been truly impressed by the professional interaction and the prostheses that are created. As a Board Certified Prosthodontist, the opportunity to collaborate with knowledgeable and discerning laboratory colleagues provides confidence and comfort to deliver the highest quality restorations for my patients. ★★★★★

- Bruce V